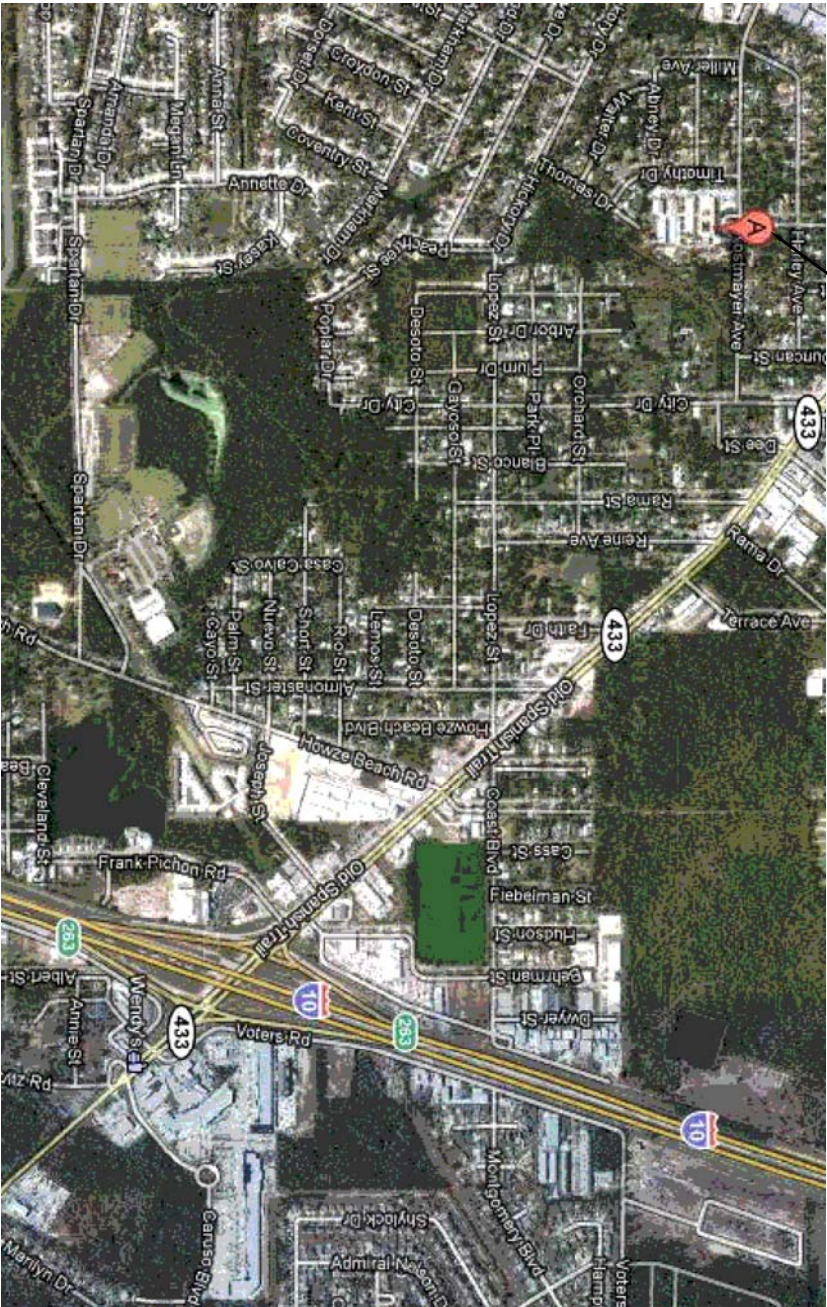


REROOFING OF
ABNEY ELEMENTARY SCHOOL
BLDG. A (#1966)
825 KOSTMAYER AVE.
SLIDELL, LOUISIANA
70458

INTERNATIONAL BUILDING CODE 2009

OCCUPANCY CLASSIFICATION:
EDUCATIONAL, GROUP E, (SEC. 305)

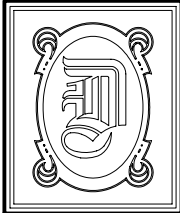
AREA OF WORK



VICINITY MAP
N.T.S.

DRAWING INDEX

-	COVER SHEET
C-1	SITE PLAN
A-1	BLDG A (No. 1966) ROOF PLAN
A-2	BLDG. A DETAILS
A-3	BLDG. A PHOTOS



DAMMON ENGINEERING, INC.
1095 FLORIDA AVE.
SLIDELL, LA 70458
WEBSITE: WWW.DAMMONENGINEERING.COM
EMAIL: DAMMONENG@BELLSOUTH.NET

OFFICE: (985) 649-5832
FAX: (985) 641-5950

DATE: 6-28-12
JOB NO.: 2145

REROOFING OF
ABNEY ELEMENTARY SCHOOL
825 KOSTMAYER AVE.
SLIDELL, LA 70458